

AVENIR - POD 15

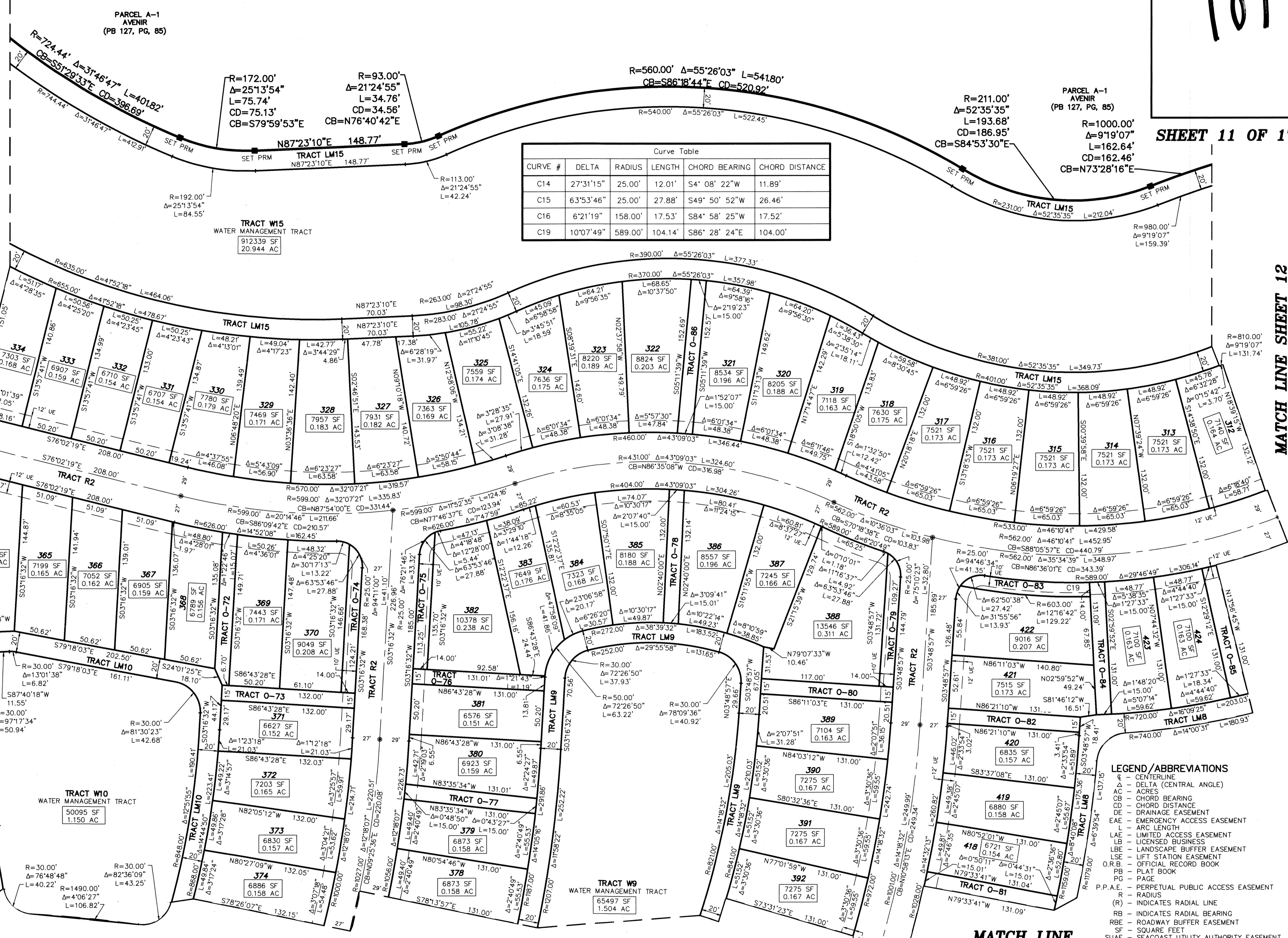
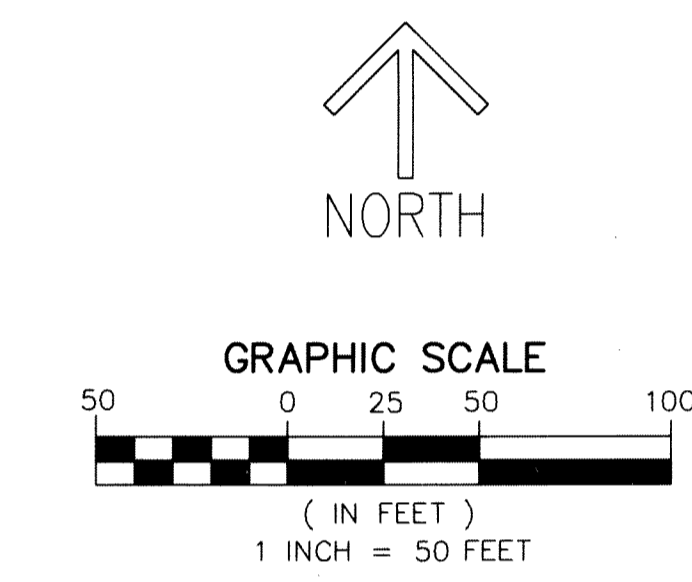
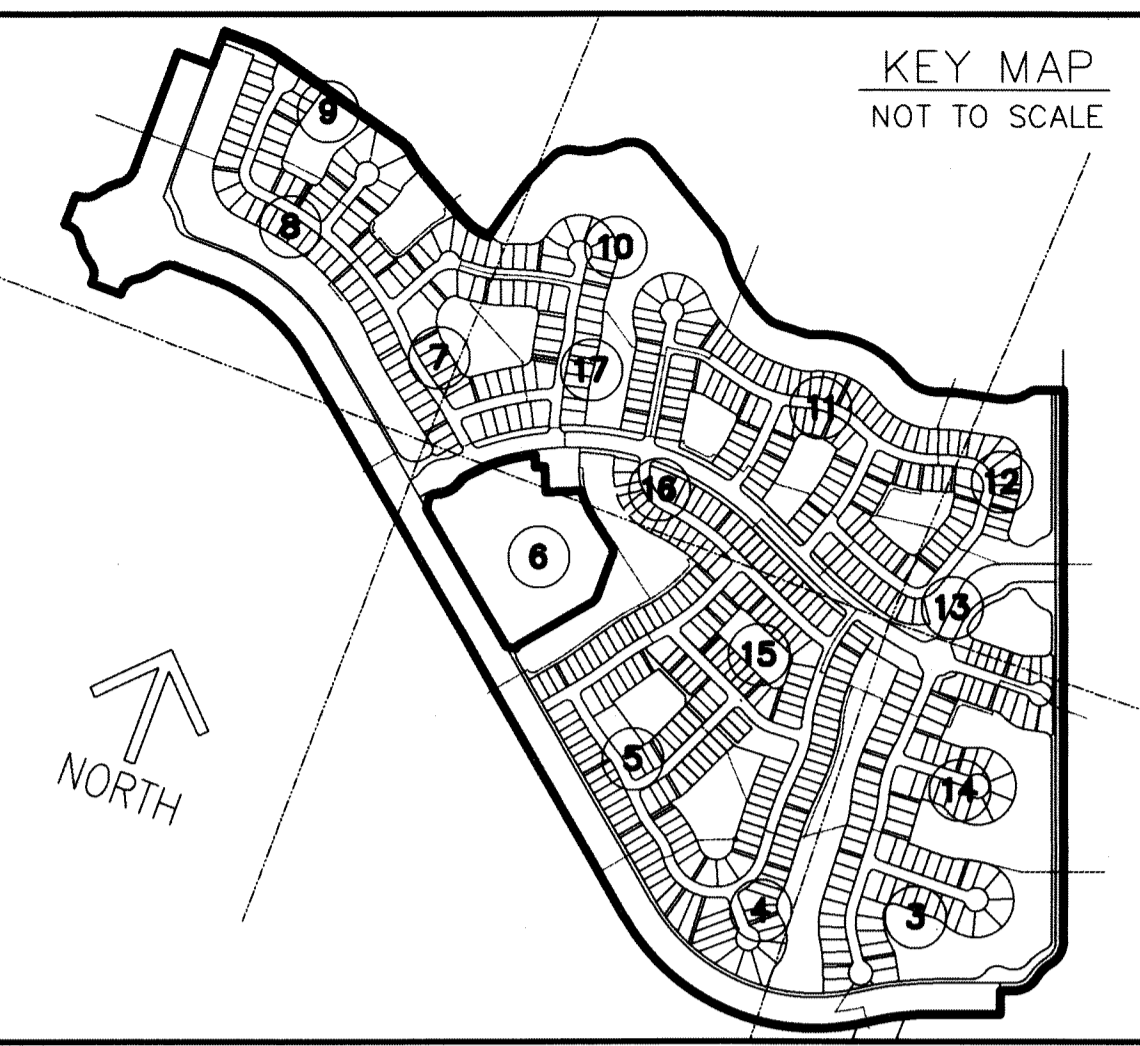
BEING A REPLAT OF A PORTION OF PARCEL A-1, AVENIR, AS RECORDED IN PLAT BOOK 127 PAGE 85, OF THE PUBLIC RECORDS OF PALM BEACH COUNTY, FLORIDA LYING IN SECTIONS 9, 10, 15 AND 16, TOWNSHIP 42 SOUTH, RANGE 41 EAST, CITY OF PALM BEACH GARDENS, PALM BEACH COUNTY, FLORIDA.

THIS INSTRUMENT PREPARED BY
RONNIE L. FURNISS
OF
CAULFIELD and WHEELER, INC.
SURVEYORS - ENGINEERS - PLANNERS
7900 GLADES ROAD, SUITE 100
BOCA RATON, FLORIDA 33434 - (561)392-1991
CERTIFICATE OF AUTHORIZATION NO. LB3591
OCTOBER 2022

189

SHEET 11 OF 17

MATCH LINE SHEET 12



Curve Table					
CURVE #	DELTA	RADIUS	LENGTH	CHORD BEARING	CHORD DISTANCE
C14	27°31'15"	25.00'	12.01'	S4° 08' 22"W	11.89'
C15	6°53'46"	25.00'	27.88'	S49° 50' 52"W	26.46'
C16	6°21'19"	158.00'	17.53'	S84° 58' 25"W	17.52'
C19	10°07'49"	589.00'	104.14'	S86° 28' 24"E	104.00'

MATCH LINE SHEET 17

MATCH LINE SHEET 16

MATCH LINE SHEET 13

- LEGEND/ABBREVIATIONS**
- CENTERLINE
 - Δ DELTA (CENTRAL ANGLE)
 - A ACRES
 - CB CHORD BEARING
 - CD CHORD DISTANCE
 - DE DRAINAGE EASEMENT
 - EAE EMERGENCY ACCESS EASEMENT
 - ARC ARC LENGTH
 - LAE LIMITED ACCESS EASEMENT
 - LB LICENSED BUSINESS
 - LSB LANDSCAPE BUFFER EASEMENT
 - LSE LIFT STATION EASEMENT
 - OR.B. OFFICIAL RECORD BOOK
 - PB PLAT BOOK
 - P.P.A.E. PERPETUAL PUBLIC ACCESS EASEMENT
 - R RADIUS
 - (R) INDICATES RADIAL LINE
 - RB INDICATES RADIAL BEARING
 - RBE ROADWAY BUFFER EASEMENT
 - SF SQUARE FEET
 - SUAE SEACOAST UTILITY AUTHORITY EASEMENT
 - UE UTILITY EASEMENT
 - PRM DENOTES PERMANENT REFERENCE MONUMENT 5/8" IRON ROD WITH CAP STAMPED "C&W PRM LB 3591"
 - DENOTES PERMANENT CONTROL POINT
 - ✱ 1/4 SECTION CORNER
 - ✱ SECTION CORNER